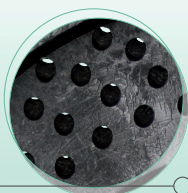


# COMPONENTS & MONOFILAMENTS



## BRUSH TOPS OR BRUSH SUPPORTS

for all makes and types of street sweepers



- SOVB designs and manufactures brush tops or brush supports to fit to the dimensions of sweeper manufacturers for all makes and types of street sweepers.

Brush tops or brush supports are made of polypropylene of the highest quality, and are **fully recyclable**.

The holes to fix the bristles can be drilled to the right (standard), or orientated (see «SOVB brush»).



Société Ouest Vendée Balais

The benchmark for roads and industrial sweeping

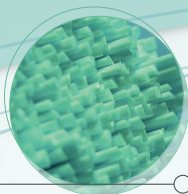
Siège social : Rabalot, 79500 St Martin lès Melle (France)

Tél. +33 (0)5 49 27 03 53 - Fax. +33 (0)5 49 29 01 69

SAS au capital de 908 800€ - RCS Niort 027 080 225 - TVA Intracom. FR 83 027 080 225

[www.sovb.fr](http://www.sovb.fr)  
Contact : [info@sovb.fr](mailto:info@sovb.fr)





## MONOFILAMENTS

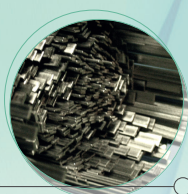
o for brushes that have multiple uses

SOVB designs and manufactures a wide range of multi-use bristles for equipping street sweeper brushes that have multiple uses (maintenance sweeping, scouring/scarifying).

Polymer		Polypropylene PP	Polyester PET	Nylon NY
Diameter (mm)	Min.	1	1	1
	Max.	3 x 2	3 x 2	3
Cut (mm)	Min.	200	200	200
	Max.	700	700	700
Variation		Smooth Crimped	Smooth Crimped	Smooth Trilobate Pentalobate



All our monofilaments are manufactured with new granules, by stretching on a cold extruder.



## FLAT BRIGHT STEEL WIRE

o for equipping street sweeper brushes

Bright steel wire		Flat WIRE
Diameter (mm)		2.8 x 0.45
		3.3 x 0.6
Cut (mm)		540
		590



Flat bright steel wire essentially designed for the furnishing of brushes which equip street sweepers.



## LL'2BCA

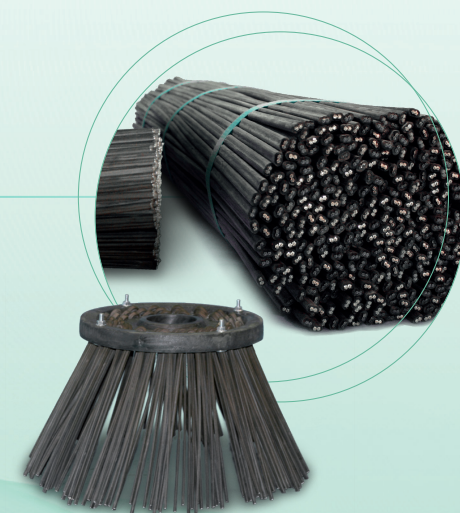
o recommended for night sweeping

Our trademark bristle «Long LIFE '2BCA» comes from the partnership of rubber and steel wire strands.

Two steel wire strands are combined in a rubber coating in order to produce a flat oblong bristle. The steel wire strand, **in high tensile, untempered steel** offers enormous resistance to rupture. The rubber coating protects it both from breaking, oxidation, wear and tear, **and absorbs sweeping noise**.

It is highly recommended for **night sweeping** because it is **noiseless**, also ideal for leaf collection thanks to the steel wire strands which hook the leaves.

LL'2BCA		Normal	Superior
2 Steel wires in a rubber coating			
Diameter (mm)		70/100	70/100
		90/100	90/100
Cut (mm)		540	540
		600	600



The «LL'2BCA» can be partnered with polypropylene (PPL) or polyester (PET) for a more or less aggressive sweep, and a longer life.

Any information provided and/or photos showing our products are not contractual: our products are updated and changed alongside any technological advances. Similarly, we may replace certain materials used to ensure we conform to market requirements.

Société Ouest Vendée Balais S.A.S. - Siège social : Rabalot, 79500 St Martin lès Melle (France)  
Tél. +33 (0)5 49 27 03 53 - Fax. +33 (0)5 49 29 01 69 - Contact : info@sovb.fr



Société Ouest Vendée Balais  
The benchmark for roads and industrial sweeping

www.sovb.fr

